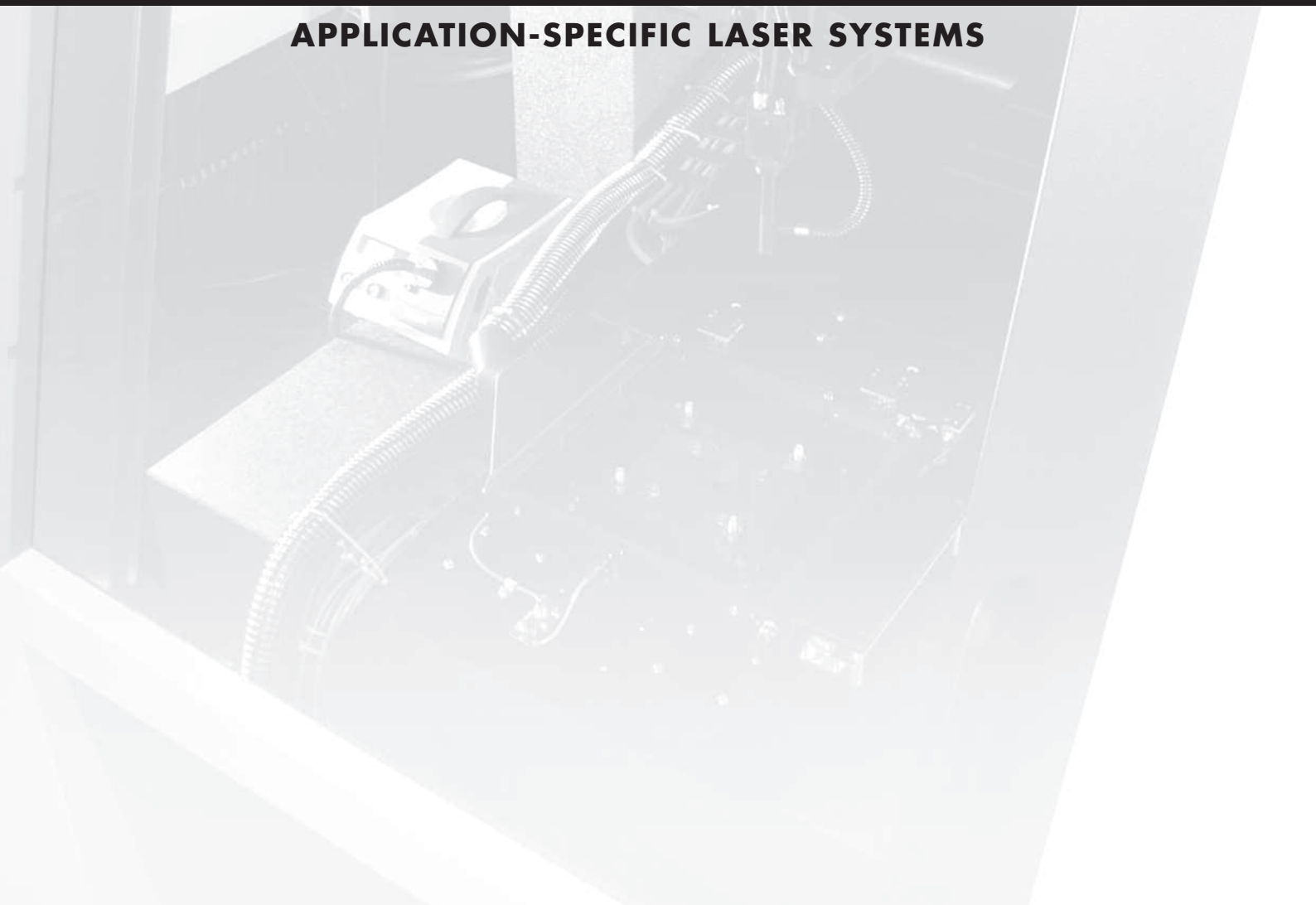


## THE SMART SOLUTION

### APPLICATION-SPECIFIC LASER SYSTEMS



## Customized Systems from ROFIN

ROFIN's customized systems group has designed and built application-specific laser systems for materials processing for more than 30 years. Combining the key disciplines of laser technology, mechanical engineering, software and process development in a unique solution ensure quality, functionality and profitability of the production. If the laser forms a significant part of the total solution, you will find ROFIN – one of the world's largest laser manufacturers – has the total competence needed to design and build your laser system.

### From process development to complete systems

The initial consideration is the technical and commercial feasibility of the laser process. The optimal process for handling specific materials and workpiece geometries can then be identified. Here, ROFIN can rely on more than 30 years of experience in laser applications. To achieve the required laser process, we can call on our wide range of high-performance laser sources and combine them with efficient engineering and process technology to create a tailor-made complete system solution. Our systems can be equipped with process data logging for total traceability, as well as with interfaces to the customer's process control system.

### Competitive advantages through innovative laser technology

- leading laser manufacturer
- integration of laser technology, mechanical engineering and software
- more than 30 years of process know-how
- conformity to industrial standards and quality norms
- worldwide service network
- solutions from a single source

## Solutions from a Single Source

### Process know-how

Welding, cutting, structuring or marking of polymers, metals or other materials – ROFIN knows almost all laser processes applied in industry with their benefits and potentials.

### Laser sources

ROFIN always provides you with the most suitable laser for your application: we offer the latest fiber, CO<sub>2</sub>, diode, rod and disc laser technology.

### Mechanical engineering

ROFIN can integrate different machine concepts and control systems, including component handling in industrial class I laser systems.



## Competence in Mechanical Engineering

### High-precision machinery

Precise granite set-up for high-accuracy and long term stability, 3 to 8 CNC-controlled axes.

### Process automation

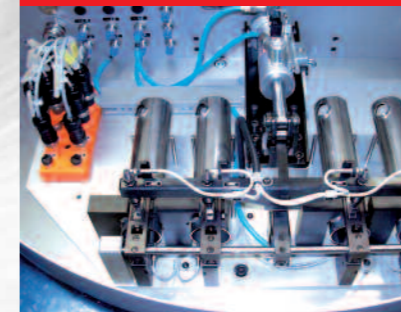
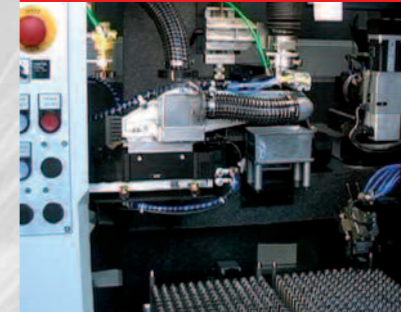
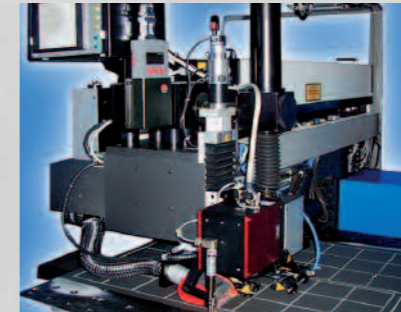
Fully automated laser processes through integration of feeding systems, pick and place systems and industrial robots.

### Rotary table systems

Flexible solution for semi-automatic production with interchangeable workpiece fixtures. Fast and safe laser processes through integrated sensors and actuators.

### Modular concept

Compact and fast all-round systems, which are also ideally suited to a range of different component geometries. Round parts as well as workpieces with two-dimensional and three-dimensional geometries can be processed efficiently.



## Laser-Know-how

### Galvo-deflection head technology

With the latest innovative deflection technology, ROFIN achieves highest travel speeds and positioning accuracy of the laser beam.

### Pattern recognition

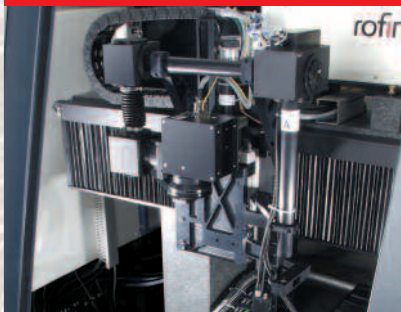
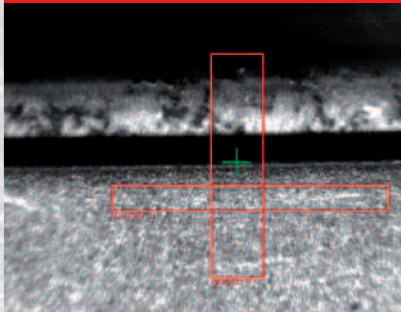
Camera monitoring through the laser optics and fast pattern recognition technology can compensate positional tolerances.

### Integration of several laser processes

Lasers with different wavelengths combined in one system: seamless processing steps, increased accuracy, higher throughput.

### Direct beam with flying optics

Small focus diameters via direct beam technology in combination with deflection heads or flying optics.





The new laser family  
for fine welding



Application-specific  
laser systems

## SOLUTIONS FROM A SINGLE SOURCE

[WWW.ROFIN.COM](http://WWW.ROFIN.COM)

### LASER MICRO

Carl Baasel Lasertechnik GmbH & Co. KG  
Petersbrunner Str. 1b  
D-82319 Starnberg  
Tel: +49(0)8151-776-0  
Fax: +49(0)8151-776-159  
Email: [sales@baasel.de](mailto:sales@baasel.de)

### LASER MARKING

ROFIN-SINAR Laser GmbH  
Neufeldstraße 16/Günding  
D-85232 Bergkirchen  
Tel: +49(0)8131-704-0  
Fax: +49(0)8131-704-100  
Email: [info@rofin-muc.de](mailto:info@rofin-muc.de)